



Capability Statement

Environmental Monitoring Plan for the BCLME Region

Client: Benguela Current Convention (BCC)



REQUIREMENTS

- To identify and assist in developing monitoring plans of pollution at “hotspot” locations within the coastal waters of the BCLME.

Pollution hotspots: areas that comprise of both pollution sources as well as local pollution receptor areas.

- To support member states (Angola, Namibia and South Africa) in setting up monitoring programmes at the various hotspot locations, so that appropriate mitigation measures and procedures for the prevention and abatement of pollution can be developed.

WORK DONE

- Conduct a preliminary survey to define the pollution hotspot areas.
- Assessed the needs of national/local institutions regarding the monitoring of pollutants.
- In consultation with stakeholders, designed monitoring programmes for pollutants from land-based sources and from ships.
- Made recommendations about the implementation of each monitoring programme.

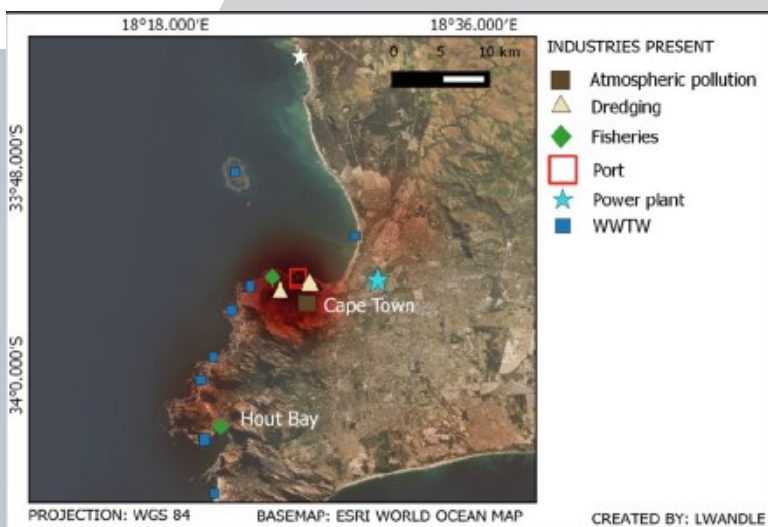
- Facilitated the integration of the monitoring programmes into the national policy of each country to ensure sustainability beyond this project.

- Provided monitoring training to technicians within national/local institutions in order to build capacity and enable sustainability and implementation of the monitoring programmes beyond the project.

OUTCOMES:

Lwandle produced a highly detailed two-phase monitoring plan for the BCLME region and details of how it can be integrated into current monitoring plans already established within each member state.

It is anticipated that each member state will be able to use the information obtained during the monitoring plan in developing mitigation measures and policies for the prevention and abatement of pollution.



“The identification of monitoring needs in pollution hotspots in South Africa, Namibia and Angola”