



Capability Statement

Environmental Effects of blasting

Client: Roman Bay Seafarm (abalone farm)

REQUIREMENTS

- To assess the probable effects that controlled blasting of rocky substrate, to expand the seawater intake system of the farm, would have on the inter- and shallow sub-tidal biota known to be present in the area.
- To rate these in terms of impacts at the species population level, and where possible, identify mitigation actions to reduce impacts

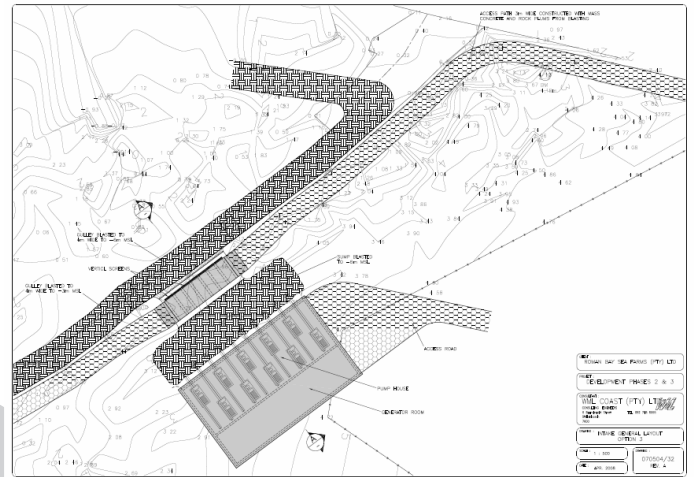
WORK DONE

- The identification of the primary environmental impacts imposed by the blasting activities and the subsequent assessment of these impacts.
- The recommendation of possible mitigation strategies the abalone farm can adopt to reduce the effects



OUTCOMES:

An environmental impact assessment report detailing the impacts of the primary environmental risks associated with the controlled blasting was delivered to the client which included mitigation measures to reduce the potential impact on the surrounding biological environment.



“probable effects that controlled blasting of rocky substrate would have on the inter- and shallow sub-tidal biota”